

NOTES:

MATERIALS

- ALL PIPE 3/4" O.D. (PAINTED RED)
- ALL TREADS 1" THICK
- STRINGERS 1 1/2" THICK

GENERAL

- PNEU CASTER HOUSING SITS ABOVE BOTTOM FRAMING OF PIPE STRUCTURE
- SHOP TBD HOW MUCH OVERLAP TOP OF PIPE GOES INTO WOODEN STRUCTURE
- MINIMIZE CLEARANCE BELOW FOR CASTERS
- SEE (1) FOR PAINT DETAILS OF ENTIRE STAIRCASE
- SCAFFOLDING IS SYMMETRICAL
- SEE LX TEAM FOR SPECIFICATIONS OF LIGHT BULB POWER RUNS

SPECS

- 29" WIDE
- 95" LONG
- WHEN STATIONARY : 10'-11"
- WHEN MOVING: 10'-11" + MINIMUM CLEARANCE REQUIRED BY CASTERS
- TOP LANDING: 8'-5"



SCENERY DESIGNER
Drafted by:
NATALIE SAINT-ROSSY
703 297 7807
NATALIE@SAINT-ROSSY.NET
VIRGINIA

SAINTROSSYDESIGNS.COM

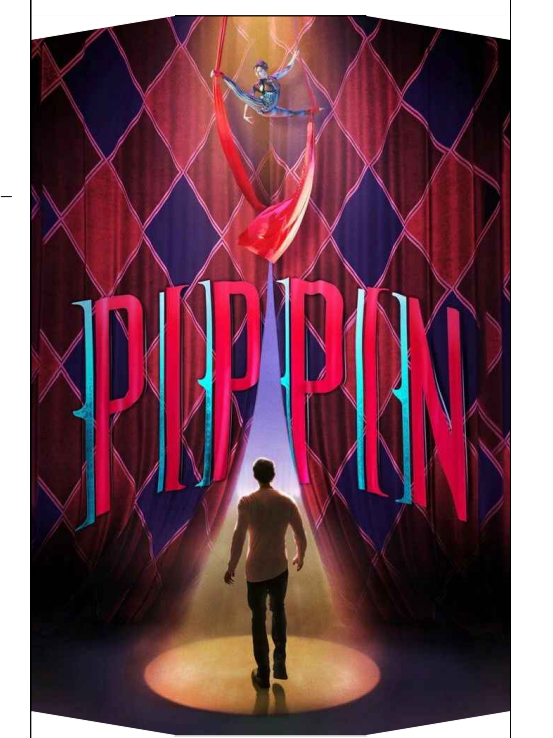
COPY RIGHTED MATERIAL
ALL INFORMATION AND DESIGNS CONTAINED HEREIN ARE PROPERTY OF THE SCENIC DESIGNER AND SUCH INFORMATION IS IMPARTED TO THE READER IN CONFIDENCE. IN ACCEPTING THIS INFORMATION, YOU AGREE NOT TO REPRODUCE IT, DISCLOSE IT, OR APPLY IT IN ANY WAY WITHOUT PRIOR WRITTEN APPROVAL OF EVAN F. ADAMSON ALL RIGHTS © 2016

ALL IDEAS, DESIGNS, ARRANGEMENTS AND PLANS AS INDICATED OR REPRESENTED BY THIS DRAWING ARE OWNED BY AND ARE THE PROPERTY OF NATALIE SAINT-ROSSY DESIGNER AND WILL BE CREATED, EVOLVED AND DEVELOPED FOR USE ON, AND IN CONNECTION WITH THIS SPECIFIC PROJECT. NONE OF THESE IDEAS, DESIGNS, ARRANGEMENTS OF PLANS SHALL BE USED BY OR DISCLOSED TO ANY PERSON, FIRM, OR CORPORATION FOR ANY PURPOSE WHATSOEVER WITHOUT THE WRITTEN PERMISSION OF NATALIE SAINT-ROSSY DESIGNER.

SCENIC DESIGN: SCOTT PASK
COS DESIGN: DOMINIQUE LEMIEUX
LX DESIGN: KENNETH POSNER
SOUND DESIGN: JONATHAN DEANS & GARTH HELM

Music Box Theatre
239 WEST 45TH STREET
NEW YORK, NY 10036

DIRECTOR
DIANE PAULUS



SCALE
1/2"=10"
OR AS NOTED
PAPER SIZE
36" x 24"
ARCH D

PUBLICATION
APRIL 20th, 2023
REVISION HISTORY
REV # 1
Date: 4/27/2023

DRAWING TITLE
Pippin Rolling Circus Stairs

PLATE #
01